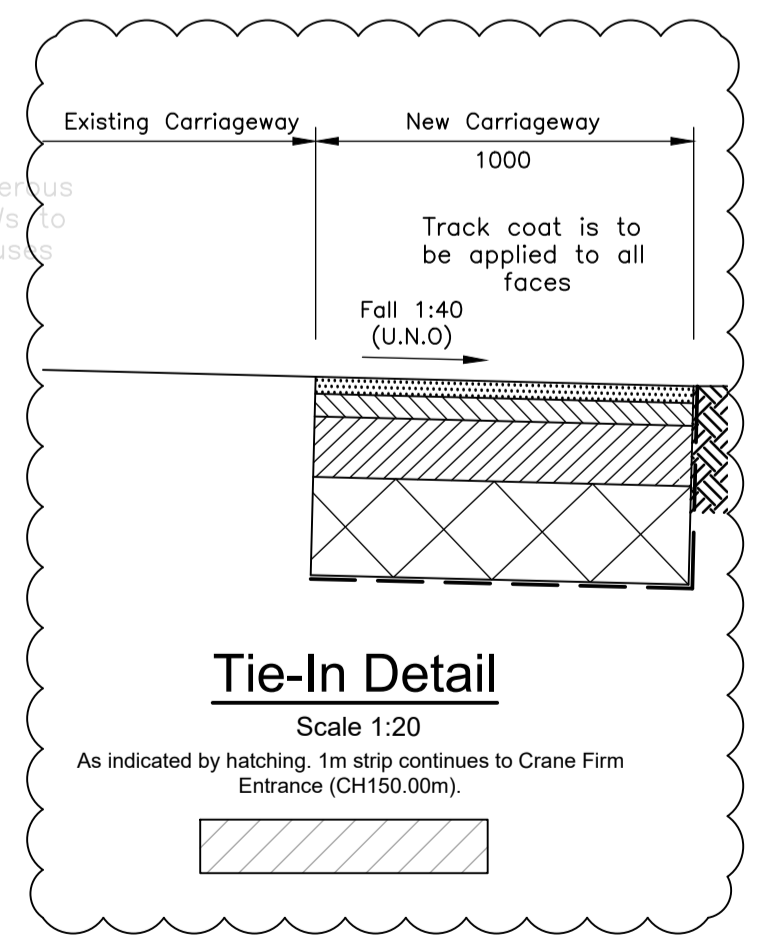
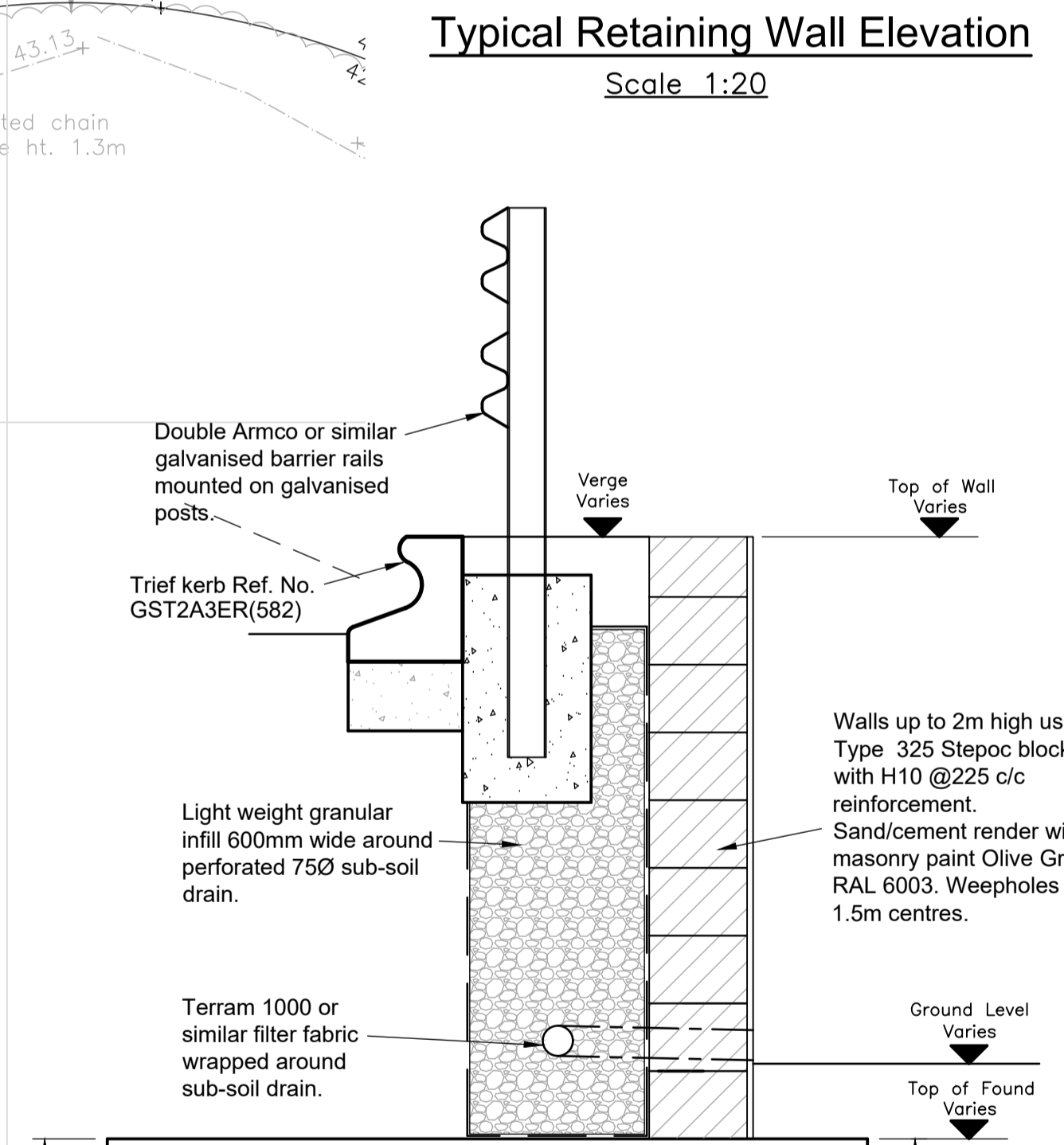
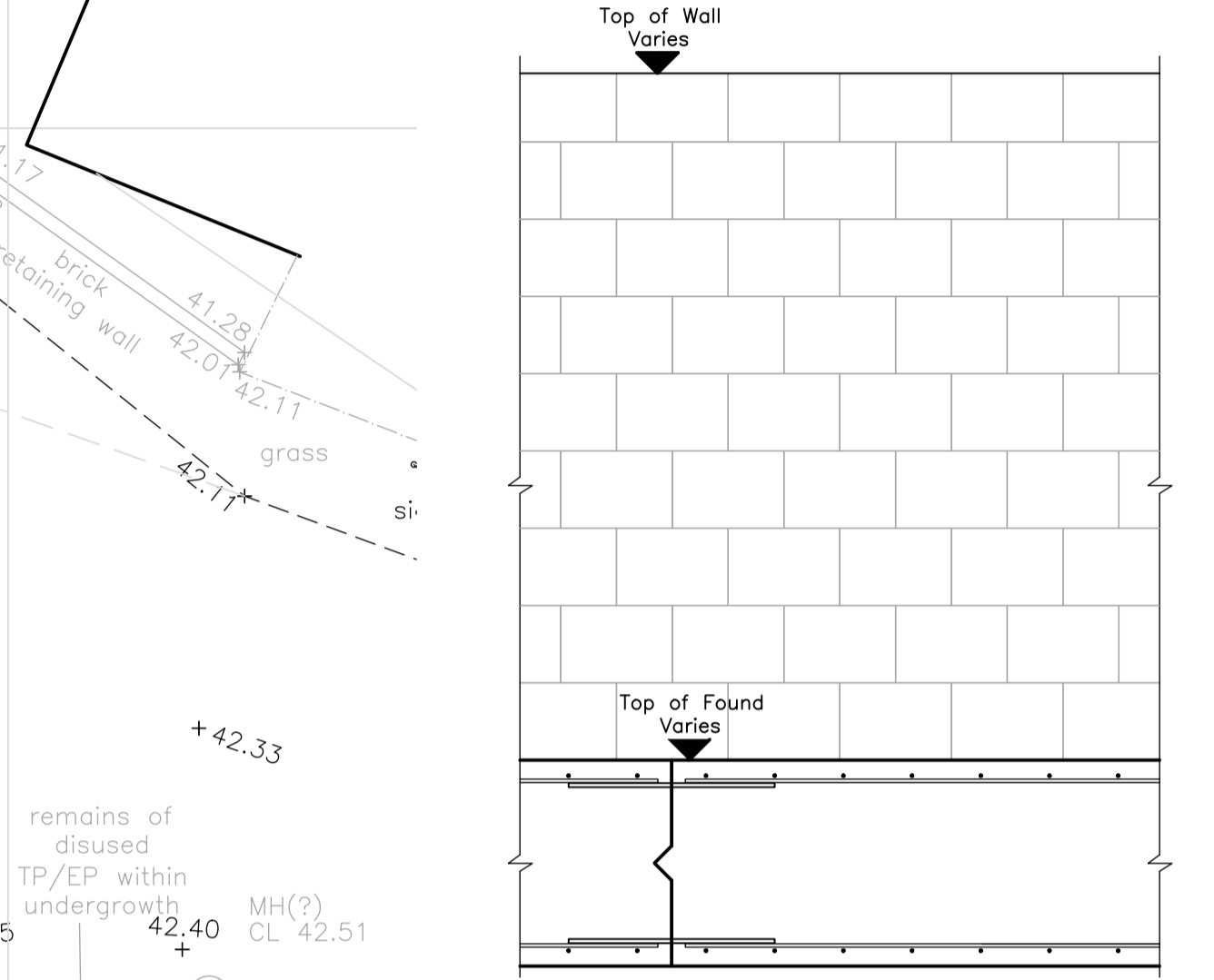
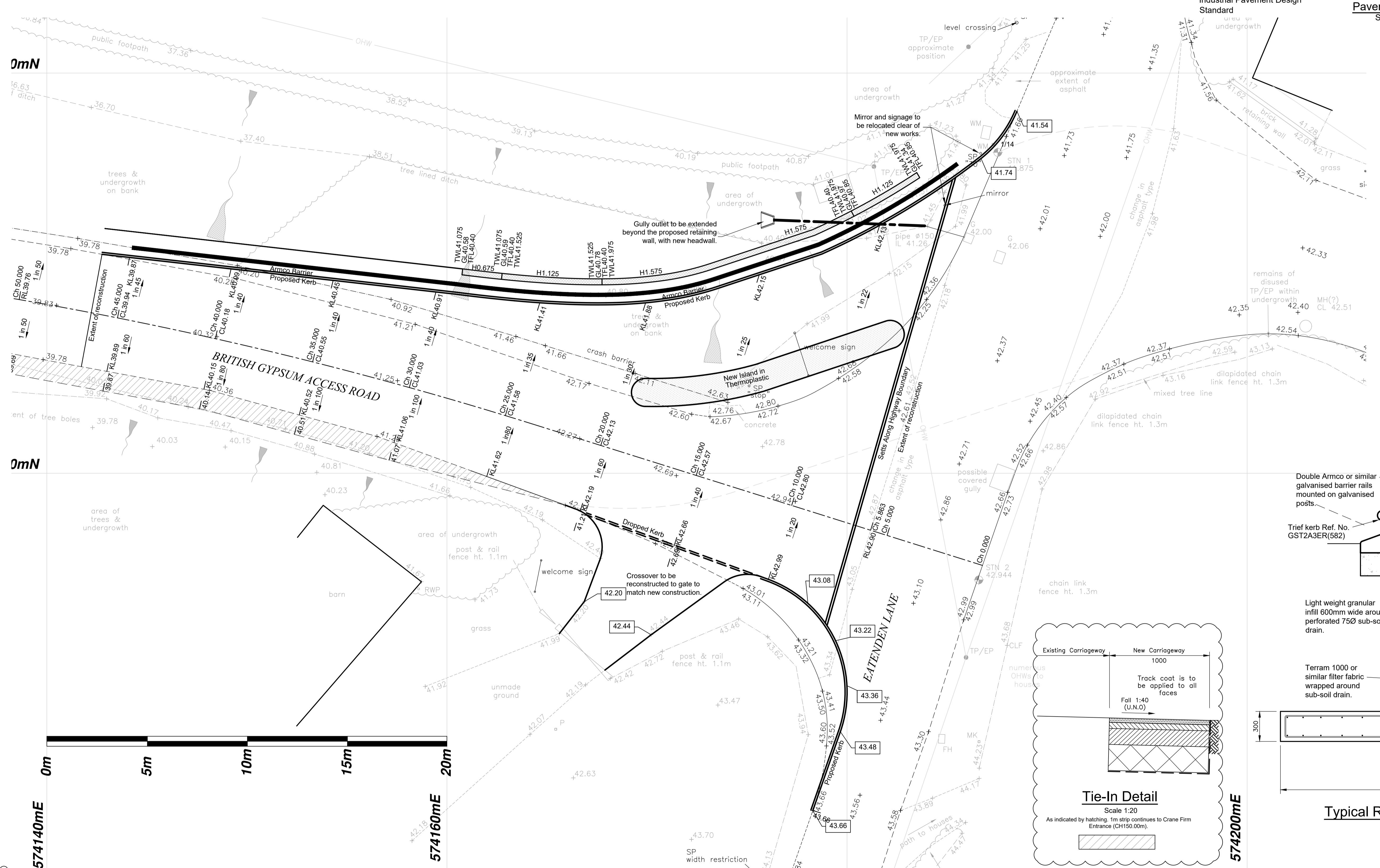
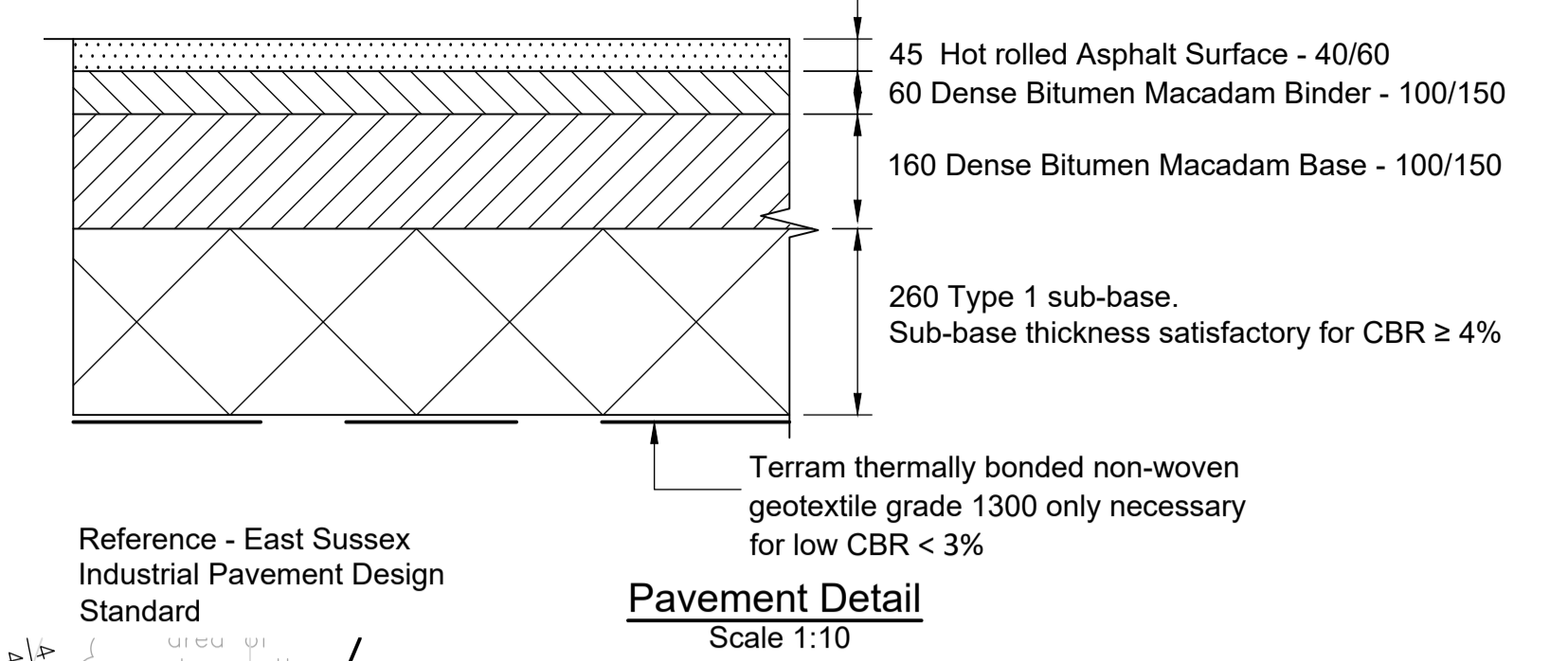


	5000	5000	5000	3000	2000	5000	5000	5000	3000	2000	2000	3000	2134										
Proposed Road Level																							
Wall Ground Level																							
DATUM 37.00	39.65	39.83	39.87	39.79	40.09	40.07	40.45	40.56	40.91	40.58	40.59	41.41	40.78	41.88	40.72	42.15	40.61	40.97	41.20	42.13	41.34	41.67	14.54
					End of wall								Top of Foundation 40.40								Top of Foundation 40.85		End of wall



PLANNING ISSUE

Evans & Langford LLP

Structural & Civil Engineers | Project Managers
Land & Building Surveyors | CDM Consultants
Geo-Environmental Engineers | Contract Administrators

Evans & Langford LLP, 91 King Street, Maidstone, Kent ME14 1BG
www.evanslangford.co.uk | Tel +44 (0) 1622 690120 | mail@evanslangford.co.uk

Revisions	Checked	Date	Revisions	Checked	Date
A Details amended following client discussions.	DPM	30.06.17			
B Scale bar added.	DPM	12.09.17			
C Tie-in detail added. Road widened.	DPM	01.11.17			

Scale	1:100	Drawn	CAS
©	A1	Date	June 17
		Checked	DPM
		Date	June 17
		Approved	
		Date	

British Gypsum Eastenden Lane Junction Improvements

Layout Plan

14219/01C